

# archmodels

prepared only for CryEngine 2016



Have you ever lost your race with time doing visualizations? Have you ever been embarrassed of unfinished renders, spending all night on the modeling process, instead of rendering? If you are an architect, and if you need to work fast but with highest precision, this is the thing for you. Archmodels volume 1 for CryEngine gives you 60 professional, detailed objects for architectural visualizations. This collection comes with high quality low poly trees models with all the textures and materials. It is ready to use, just put it into your scene. Why waste costly time for making something that you can have from the best at Evermotion?



Software and models © 2016 EVERMOTION. EVERMOTION logo is trademark or registered trademark of Evermotion Inc. in the U.S. and/or other countries. All rights reserved. All \*.cgf, \*.dds, \*.tif, models included on this collection with data are an integral part of "archmodels vol.1 for CryEngine" and the resale of this data is strictly prohibited. All models can be used for commercial purposes only by owners who bought this archmodels collection. The sharing of archmodels collection data is strictly prohibited unless that user has written authorization from EVERMOTION.



# archmodels

prepared only for CryEngine 2016



Have you ever lost your race with time doing visualizations? Have you ever been embarrassed of unfinished renders, spending all night on the modeling process, instead of rendering? If you are an architect, and if you need to work fast but with highest precision, this is the thing for you. Archmodels volume 1 for CryEngine gives you 60 professional, detailed objects for architectural visualizations. This collection comes with high quality low poly trees models with all the textures and materials. It is ready to use, just put it into your scene. Why waste costly time for making something that you can have from the best at Evermotion?



Software and models © 2016 EVERMOTION. EVERMOTION logo is trademark or registered trademark of Evermotion Inc. in the U.S. and/or other countries. All rights reserved. All \*.cgf, \*.dds, \*.tif, models included on this collection with data are an integral part of "archmodels vol.1 for CryEngine" and the resale of this data is strictly prohibited. All models can be used for commercial purposes only by owners who bought this archmodels collection. The sharing of archmodels collection data is strictly prohibited unless that user has written authorization from EVERMOTION.

# archmodels

prepared only for CryEngine 2016



Have you ever lost your race with time doing visualizations? Have you ever been embarrassed of unfinished renders, spending all night on the modeling process, instead of rendering? If you are an architect, and if you need to work fast but with highest precision, this is the thing for you. Archmodels volume 1 for CryEngine gives you 60 professional, detailed objects for architectural visualizations. This collection comes with high quality low poly trees models with all the textures and materials. It is ready to use, just put it into your scene. Why waste costly time for making something that you can have from the best at Evermotion?

polys: 108 666  
tris: 139 813



model  
**001**

polys: 37 019  
tris: 53 616



model  
**002**

polys: 41 705  
tris: 58 203



model  
**003**

polys: 23 099  
tris: 32 557



model  
**004**

Software and models © 2016 EVERMOTION. EVERMOTION logo is trademark or registered trademark of Evermotion Inc. in the U.S. and/or other countries. All rights reserved. All \*.cgf, \*.dds, \*.tif, models included on this collection with data are an integral part of "archmodels vol.1 for CryEngine" and the resale of this data is strictly prohibited. All models can be used for commercial purposes only by owners who bought this archmodels collection. The sharing of archmodels collection data is strictly prohibited unless that user has written authorization from EVERMOTION.



# archmodels

prepared only for CryEngine 2016



Have you ever lost your race with time doing visualizations? Have you ever been embarrassed of unfinished renders, spending all night on the modeling process, instead of rendering? If you are an architect, and if you need to work fast but with highest precision, this is the thing for you. Archmodels volume 1 for CryEngine gives you 60 professional, detailed objects for architectural visualizations. This collection comes with high quality low poly trees models with all the textures and materials. It is ready to use, just put it into your scene. Why waste costly time for making something that you can have from the best at Evermotion?

polys: 22 817  
tris: 29 183



model  
**005**

polys: 25 173  
tris: 36 085



model  
**006**

polys: 106 068  
tris: 156 106



model  
**007**

polys: 85 903  
tris: 129 531



model  
**008**

Software and models © 2016 EVERMOTION. EVERMOTION logo is trademark or registered trademark of Evermotion Inc. in the U.S. and/or other countries. All rights reserved. All \*.cgf, \*.dds, \*.tif, models included on this collection with data are an integral part of "archmodels vol.1 for CryEngine" and the resale of this data is strictly prohibited. All models can be used for commercial purposes only by owners who bought this archmodels collection. The sharing of archmodels collection data is strictly prohibited unless that user has written authorization from EVERMOTION.



# archmodels

prepared only for **CryEngine** 2016



Have you ever lost your race with time doing visualizations? Have you ever been embarrassed of unfinished renders, spending all night on the modeling process, instead of rendering? If you are an architect, and if you need to work fast but with highest precision, this is the thing for you. Archmodels volume 1 for CryEngine gives you 60 professional, detailed objects for architectural visualizations. This collection comes with high quality low poly trees models with all the textures and materials. It is ready to use, just put it into your scene. Why waste costly time for making something that you can have from the best at Evermotion?

polys: 116 015  
tris: 155 244



model  
**009**

polys: 86 495  
tris: 120 327



model  
**010**

polys: 66 285  
tris: 80 810



model  
**011**

polys: 44 287  
tris: 55 738



model  
**012**

Software and models © 2016 EVERMOTION. EVERMOTION logo is trademark or registered trademark of Evermotion Inc. in the U.S. and/or other countries. All rights reserved. All \*.cgf, \*.dds, \*.tif, models included on this collection with data are an integral part of "archmodels vol.1 for CryEngine" and the resale of this data is strictly prohibited. All models can be used for commercial purposes only by owners who bought this archmodels collection. The sharing of archmodels collection data is strictly prohibited unless that user has written authorization from EVERMOTION.

# archmodels

prepared only for CryEngine 2016



Have you ever lost your race with time doing visualizations? Have you ever been embarrassed of unfinished renders, spending all night on the modeling process, instead of rendering? If you are an architect, and if you need to work fast but with highest precision, this is the thing for you. Archmodels volume 1 for CryEngine gives you 60 professional, detailed objects for architectural visualizations. This collection comes with high quality low poly trees models with all the textures and materials. It is ready to use, just put it into your scene. Why waste costly time for making something that you can have from the best at Evermotion?

polys: 44 453  
tris: 50 506



model  
**013**

polys: 28 347  
tris: 34 464



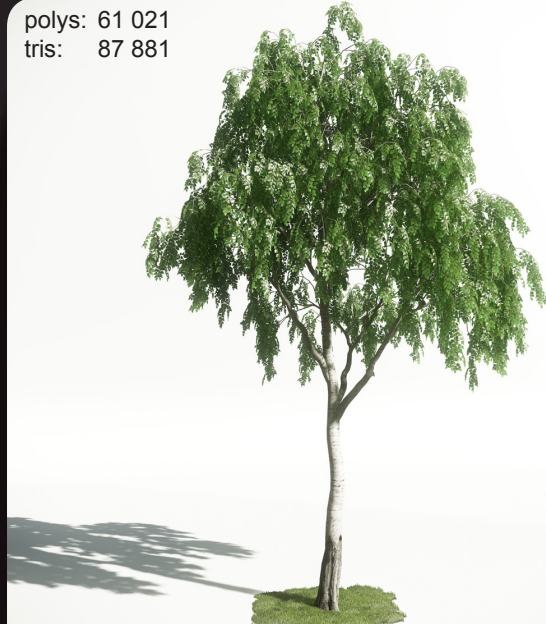
model  
**014**

polys: 34 658  
tris: 42 215



model  
**015**

polys: 61 021  
tris: 87 881



model  
**016**

Software and models © 2016 EVERMOTION. EVERMOTION logo is trademark or registered trademark of Evermotion Inc. in the U.S. and/or other countries. All rights reserved. All \*.cgf, \*.dds, \*.tif, models included on this collection with data are an integral part of "archmodels vol.1 for CryEngine" and the resale of this data is strictly prohibited. All models can be used for commercial purposes only by owners who bought this archmodels collection. The sharing of archmodels collection data is strictly prohibited unless that user has written authorization from EVERMOTION.



# archmodels

prepared only for CryEngine 2016



Have you ever lost your race with time doing visualizations? Have you ever been embarrassed of unfinished renders, spending all night on the modeling process, instead of rendering? If you are an architect, and if you need to work fast but with highest precision, this is the thing for you. Archmodels volume 1 for CryEngine gives you 60 professional, detailed objects for architectural visualizations. This collection comes with high quality low poly trees models with all the textures and materials. It is ready to use, just put it into your scene. Why waste costly time for making something that you can have from the best at Evermotion?

polys: 66 825  
tris: 66 825



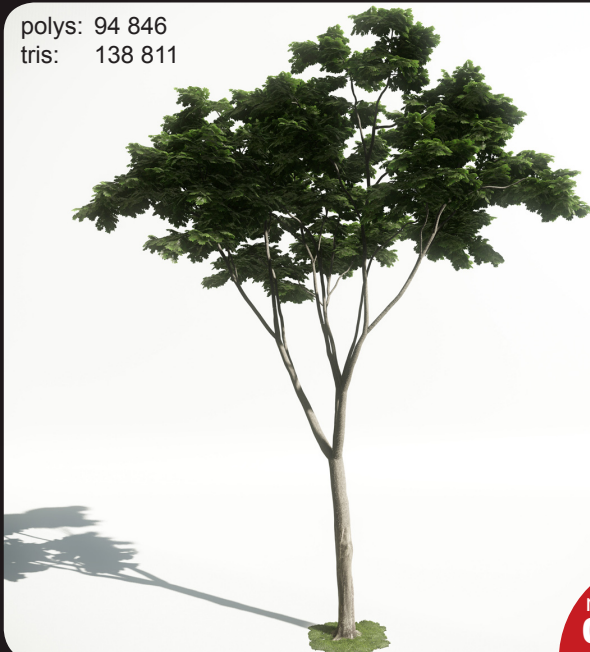
model  
**017**

polys: 51 158  
tris: 69 657



model  
**018**

polys: 94 846  
tris: 138 811



model  
**019**

polys: 59 550  
tris: 100 460



model  
**020**

Software and models © 2016 EVERMOTION. EVERMOTION logo is trademark or registered trademark of Evermotion Inc. in the U.S. and/or other countries. All rights reserved. All \*.cgf, \*.dds, \*.tif, models included on this collection with data are an integral part of "archmodels vol.1 for CryEngine" and the resale of this data is strictly prohibited. All models can be used for commercial purposes only by owners who bought this archmodels collection. The sharing of archmodels collection data is strictly prohibited unless that user has written authorization from EVERMOTION.

# archmodels

prepared only for CryEngine 2016



Have you ever lost your race with time doing visualizations? Have you ever been embarrassed of unfinished renders, spending all night on the modeling process, instead of rendering? If you are an architect, and if you need to work fast but with highest precision, this is the thing for you. Archmodels volume 1 for CryEngine gives you 60 professional, detailed objects for architectural visualizations. This collection comes with high quality low poly trees models with all the textures and materials. It is ready to use, just put it into your scene. Why waste costly time for making something that you can have from the best at Evermotion?

polys: 60 057  
tris: 97 250



model  
**021**

polys: 36 231  
tris: 43 077



model  
**022**

polys: 25 941  
tris: 32 277



model  
**023**

polys: 49 105  
tris: 63 199



model  
**024**

Software and models © 2016 EVERMOTION. EVERMOTION logo is trademark or registered trademark of Evermotion Inc. in the U.S. and/or other countries. All rights reserved. All \*.cgf, \*.dds, \*.tif, models included on this collection with data are an integral part of "archmodels vol.1 for CryEngine" and the resale of this data is strictly prohibited. All models can be used for commercial purposes only by owners who bought this archmodels collection. The sharing of archmodels collection data is strictly prohibited unless that user has written authorization from EVERMOTION.



# archmodels

prepared only for CryEngine 2016



Have you ever lost your race with time doing visualizations? Have you ever been embarrassed of unfinished renders, spending all night on the modeling process, instead of rendering? If you are an architect, and if you need to work fast but with highest precision, this is the thing for you. Archmodels volume 1 for CryEngine gives you 60 professional, detailed objects for architectural visualizations. This collection comes with high quality low poly trees models with all the textures and materials. It is ready to use, just put it into your scene. Why waste costly time for making something that you can have from the best at Evermotion?

polys: 41 415  
tris: 67 346



model  
**025**

polys: 47 584  
tris: 78 747



model  
**026**

polys: 50 001  
tris: 80 476



model  
**027**

polys: 25 438  
tris: 29 472



model  
**028**

Software and models © 2016 EVERMOTION. EVERMOTION logo is trademark or registered trademark of Evermotion Inc. in the U.S. and/or other countries. All rights reserved. All \*.cgf, \*.dds, \*.tif, models included on this collection with data are an integral part of "archmodels vol.1 for CryEngine" and the resale of this data is strictly prohibited. All models can be used for commercial purposes only by owners who bought this archmodels collection. The sharing of archmodels collection data is strictly prohibited unless that user has written authorization from EVERMOTION.

# archmodels

prepared only for CryEngine 2016



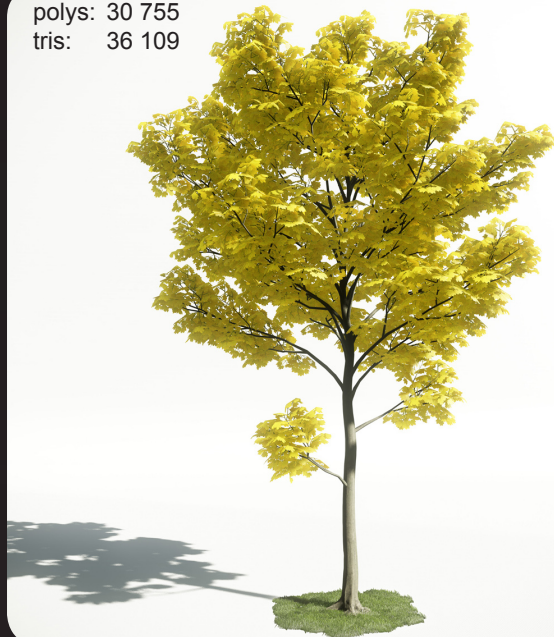
Have you ever lost your race with time doing visualizations? Have you ever been embarrassed of unfinished renders, spending all night on the modeling process, instead of rendering? If you are an architect, and if you need to work fast but with highest precision, this is the thing for you. Archmodels volume 1 for CryEngine gives you 60 professional, detailed objects for architectural visualizations. This collection comes with high quality low poly trees models with all the textures and materials. It is ready to use, just put it into your scene. Why waste costly time for making something that you can have from the best at Evermotion?

polys: 22 286  
tris: 26 181



model  
**029**

polys: 30 755  
tris: 36 109



model  
**030**

polys: 38 889  
tris: 53 684



model  
**031**

polys: 44 010  
tris: 62 212



model  
**032**

Software and models © 2016 EVERMOTION. EVERMOTION logo is trademark or registered trademark of Evermotion Inc. in the U.S. and/or other countries. All rights reserved. All \*.cgf, \*.dds, \*.tif, models included on this collection with data are an integral part of "archmodels vol.1 for CryEngine" and the resale of this data is strictly prohibited. All models can be used for commercial purposes only by owners who bought this archmodels collection. The sharing of archmodels collection data is strictly prohibited unless that user has written authorization from EVERMOTION.



# archmodels

prepared only for CryEngine 2016



Have you ever lost your race with time doing visualizations? Have you ever been embarrassed of unfinished renders, spending all night on the modeling process, instead of rendering? If you are an architect, and if you need to work fast but with highest precision, this is the thing for you. Archmodels volume 1 for CryEngine gives you 60 professional, detailed objects for architectural visualizations. This collection comes with high quality low poly trees models with all the textures and materials. It is ready to use, just put it into your scene. Why waste costly time for making something that you can have from the best at Evermotion?

polys: 49 950  
tris: 74 181



model  
**033**

polys: 20 413  
tris: 35 473



model  
**034**

polys: 48 710  
tris: 80 497



model  
**035**

polys: 44 592  
tris: 77 247



model  
**036**

Software and models © 2016 EVERMOTION. EVERMOTION logo is trademark or registered trademark of Evermotion Inc. in the U.S. and/or other countries. All rights reserved. All \*.cgf, \*.dds, \*.tif, models included on this collection with data are an integral part of "archmodels vol.1 for CryEngine" and the resale of this data is strictly prohibited. All models can be used for commercial purposes only by owners who bought this archmodels collection. The sharing of archmodels collection data is strictly prohibited unless that user has written authorization from EVERMOTION.

# archmodels

prepared only for CryEngine 2016



Have you ever lost your race with time doing visualizations? Have you ever been embarrassed of unfinished renders, spending all night on the modeling process, instead of rendering? If you are an architect, and if you need to work fast but with highest precision, this is the thing for you. Archmodels volume 1 for CryEngine gives you 60 professional, detailed objects for architectural visualizations. This collection comes with high quality low poly trees models with all the textures and materials. It is ready to use, just put it into your scene. Why waste costly time for making something that you can have from the best at Evermotion?

polys: 35 585  
tris: 54 427



model  
**037**

polys: 36 556  
tris: 56 219



model  
**038**

polys: 62 011  
tris: 95 398



model  
**039**

polys: 61 517  
tris: 96 157



model  
**040**

Software and models © 2016 EVERMOTION. EVERMOTION logo is trademark or registered trademark of Evermotion Inc. in the U.S. and/or other countries. All rights reserved. All \*.cgf, \*.dds, \*.tif, models included on this collection with data are an integral part of "archmodels vol.1 for CryEngine" and the resale of this data is strictly prohibited. All models can be used for commercial purposes only by owners who bought this archmodels collection. The sharing of archmodels collection data is strictly prohibited unless that user has written authorization from EVERMOTION.



# archmodels

prepared only for **CryEngine** 2016



Have you ever lost your race with time doing visualizations? Have you ever been embarrassed of unfinished renders, spending all night on the modeling process, instead of rendering? If you are an architect, and if you need to work fast but with highest precision, this is the thing for you. Archmodels volume 1 for CryEngine gives you 60 professional, detailed objects for architectural visualizations. This collection comes with high quality low poly trees models with all the textures and materials. It is ready to use, just put it into your scene. Why waste costly time for making something that you can have from the best at Evermotion?

polys: 57 530  
tris: 77 639



model  
**041**

polys: 33 112  
tris: 40 035



model  
**042**

polys: 15 798  
tris: 27 474



model  
**043**

polys: 69 381  
tris: 117 155



model  
**044**

# archmodels

prepared only for **CryEngine** 2016



Have you ever lost your race with time doing visualizations? Have you ever been embarrassed of unfinished renders, spending all night on the modeling process, instead of rendering? If you are an architect, and if you need to work fast but with highest precision, this is the thing for you. Archmodels volume 1 for CryEngine gives you 60 professional, detailed objects for architectural visualizations. This collection comes with high quality low poly trees models with all the textures and materials. It is ready to use, just put it into your scene. Why waste costly time for making something that you can have from the best at Evermotion?

polys: 48874  
tris: 84739



model  
**045**

polys: 69570  
tris: 94700



model  
**046**

polys: 65787  
tris: 89437



model  
**047**

polys: 112182  
tris: 169752



model  
**048**

Software and models © 2016 EVERMOTION. EVERMOTION logo is trademark or registered trademark of Evermotion Inc. in the U.S. and/or other countries. All rights reserved. All \*.cgf, \*.dds, \*.tif, models included on this collection with data are an integral part of "archmodels vol.1 for CryEngine" and the resale of this data is strictly prohibited. All models can be used for commercial purposes only by owners who bought this archmodels collection. The sharing of archmodels collection data is strictly prohibited unless that user has written authorization from EVERMOTION.



# archmodels

prepared only for CryEngine 2016



Have you ever lost your race with time doing visualizations? Have you ever been embarrassed of unfinished renders, spending all night on the modeling process, instead of rendering? If you are an architect, and if you need to work fast but with highest precision, this is the thing for you. Archmodels volume 1 for CryEngine gives you 60 professional, detailed objects for architectural visualizations. This collection comes with high quality low poly trees models with all the textures and materials. It is ready to use, just put it into your scene. Why waste costly time for making something that you can have from the best at Evermotion?

polys: 54 069  
tris: 61 040



model  
**049**

polys: 56 588  
tris: 64 028



model  
**050**

polys: 56 576  
tris: 66 949



model  
**051**

polys: 94 994  
tris: 111 609



model  
**052**

Software and models © 2016 EVERMOTION. EVERMOTION logo is trademark or registered trademark of Evermotion Inc. in the U.S. and/or other countries. All rights reserved. All \*.cgf, \*.dds, \*.tif, models included on this collection with data are an integral part of "archmodels vol.1 for CryEngine" and the resale of this data is strictly prohibited. All models can be used for commercial purposes only by owners who bought this archmodels collection. The sharing of archmodels collection data is strictly prohibited unless that user has written authorization from EVERMOTION.

# archmodels

prepared only for CryEngine 2016



Have you ever lost your race with time doing visualizations? Have you ever been embarrassed of unfinished renders, spending all night on the modeling process, instead of rendering? If you are an architect, and if you need to work fast but with highest precision, this is the thing for you. Archmodels volume 1 for CryEngine gives you 60 professional, detailed objects for architectural visualizations. This collection comes with high quality low poly trees models with all the textures and materials. It is ready to use, just put it into your scene. Why waste costly time for making something that you can have from the best at Evermotion?

polys: 74 260  
tris: 86 614



model  
**053**

polys: 71 432  
tris: 81 019



model  
**054**

polys: 9 724  
tris: 9 736



model  
**055**

polys: 9 378  
tris: 16 072



model  
**056**

Software and models © 2016 EVERMOTION. EVERMOTION logo is trademark or registered trademark of Evermotion Inc. in the U.S. and/or other countries. All rights reserved. All \*.cgf, \*.dds, \*.tif, models included on this collection with data are an integral part of "archmodels vol.1 for CryEngine" and the resale of this data is strictly prohibited. All models can be used for commercial purposes only by owners who bought this archmodels collection. The sharing of archmodels collection data is strictly prohibited unless that user has written authorization from EVERMOTION.



# archmodels

prepared only for CryEngine 2016



Have you ever lost your race with time doing visualizations? Have you ever been embarrassed of unfinished renders, spending all night on the modeling process, instead of rendering? If you are an architect, and if you need to work fast but with highest precision, this is the thing for you. Archmodels volume 1 for CryEngine gives you 60 professional, detailed objects for architectural visualizations. This collection comes with high quality low poly trees models with all the textures and materials. It is ready to use, just put it into your scene. Why waste costly time for making something that you can have from the best at Evermotion?

polys: 29 108  
tris: 29 108



model  
**057**

polys: 14 672  
tris: 29 344



model  
**058**

polys: 3 994  
tris: 3 994



model  
**059**

polys: 35 378  
tris: 59 977



model  
**060**